

INDEX TO CHARTS AND TABLES

Page 1: This index

Page 2: 1978-2014 summary of annual Lake deliveries to the Everglades Water Conservation Areas, showing both untreated deliveries and Lake deliveries treated in the Stormwater Treatment Areas (STAs). Flows are presented in acre feet per year.

Page 3: Same as on Page 2, but flows are shown in billion gallons per year.

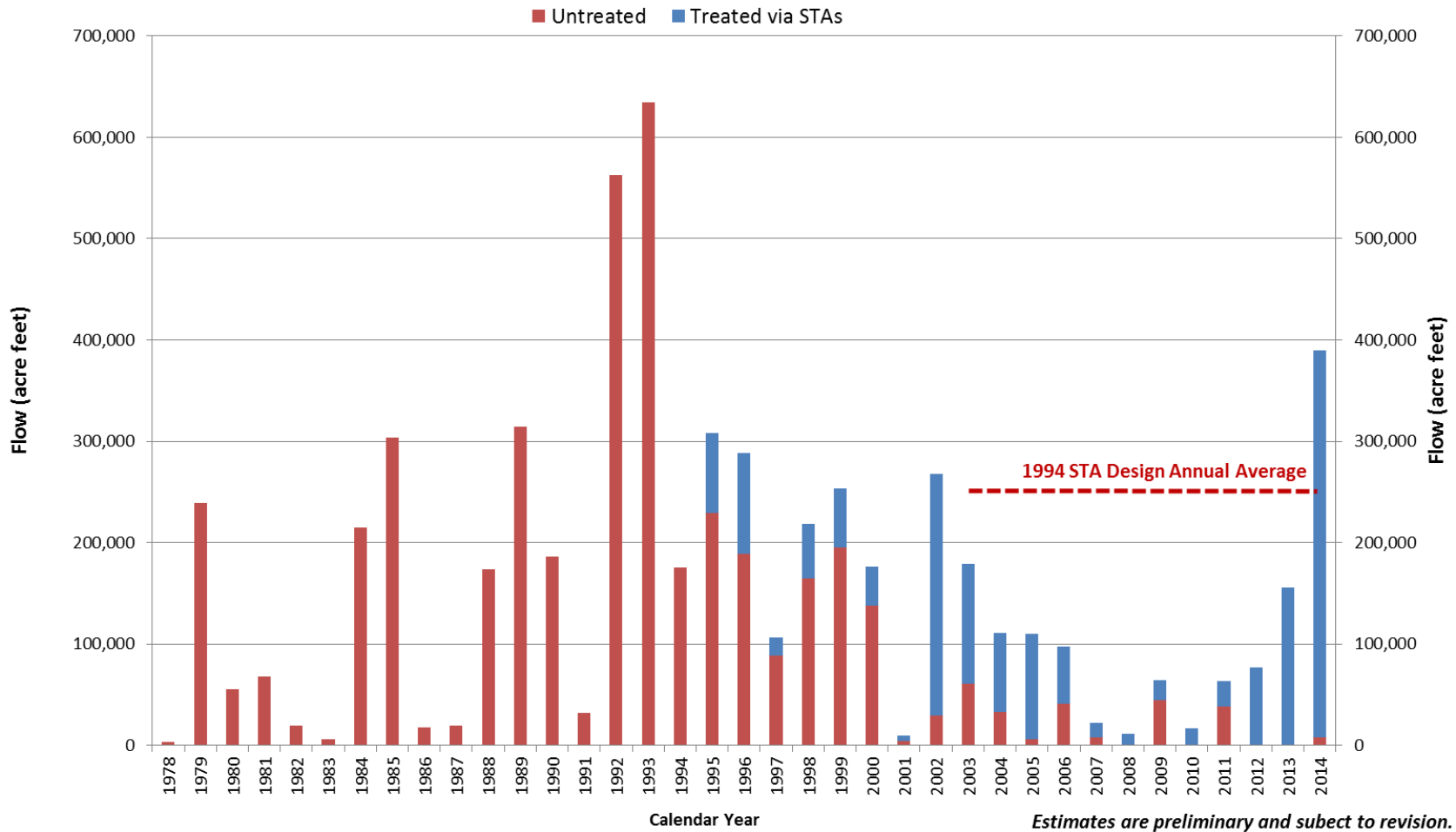
Page 4: 1978-2014 summary of annual Lake deliveries to both the Everglades WCAs and the estuaries. Flows are presented in acre feet per year.

Page 5: Table of the annual flow presented in the chart on Page 4.

Page 6: Same as on Page 4, but flows are shown in billion gallons per year.

Page 7: Table of the annual flow presented in the chart on Page 4.

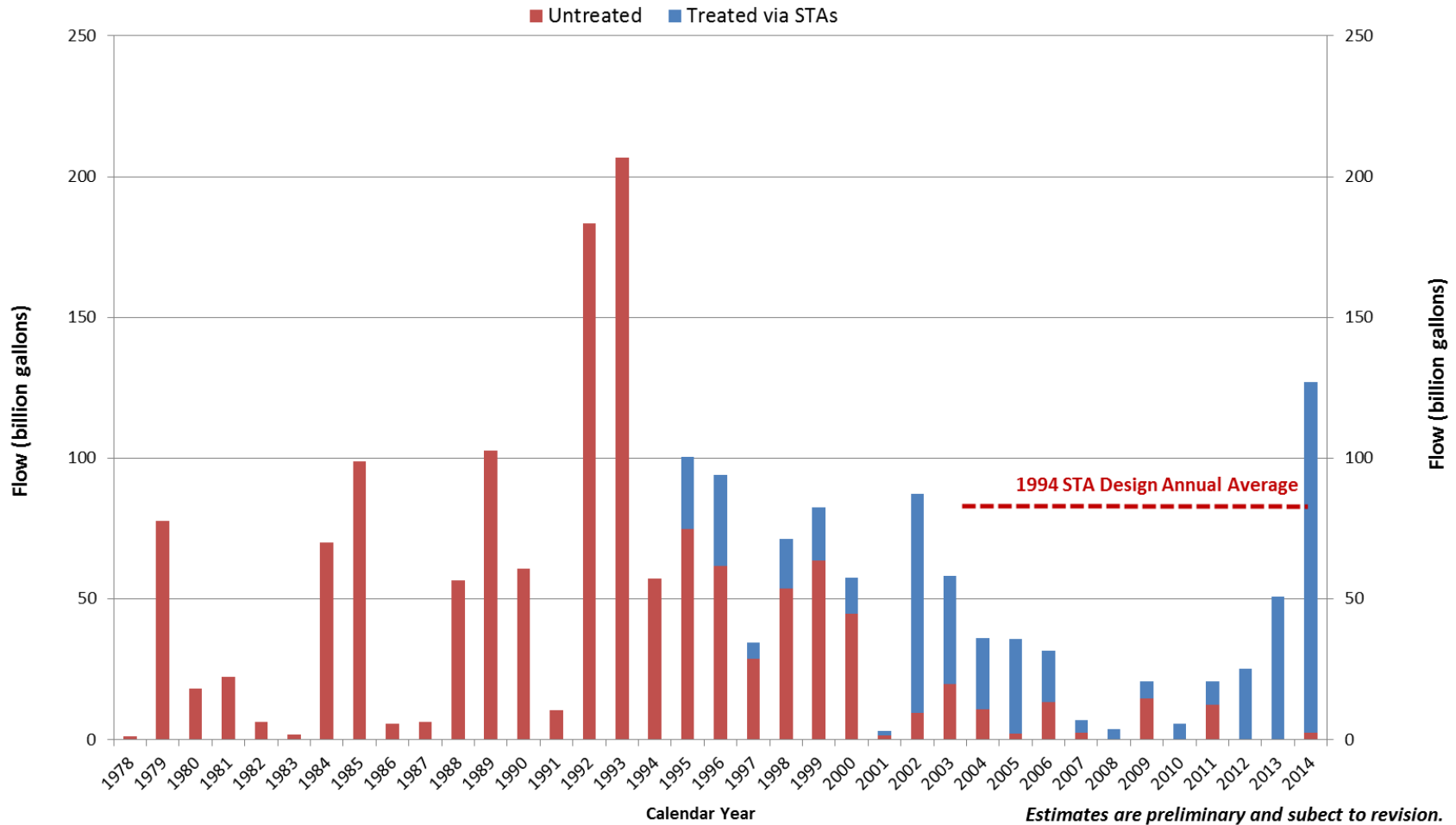
Lake Releases through the EAA and L-8 Basins to WCAs 2014: 390,000 acre feet of Lake water to the Everglades



Lake releases south include regulatory releases and water supply that pass through the EAA and L-8 basins via the West Palm Beach, Hillsboro, North New River, Miami and L-8 canals; includes water not treated in STAs.

1979-1988 Base Period Lake flows to WCAs = 100,931 acre feet per year.

Lake Releases through the EAA and L-8 Basins to WCAs 2014: 124 billion gallons of Lake water to the Everglades

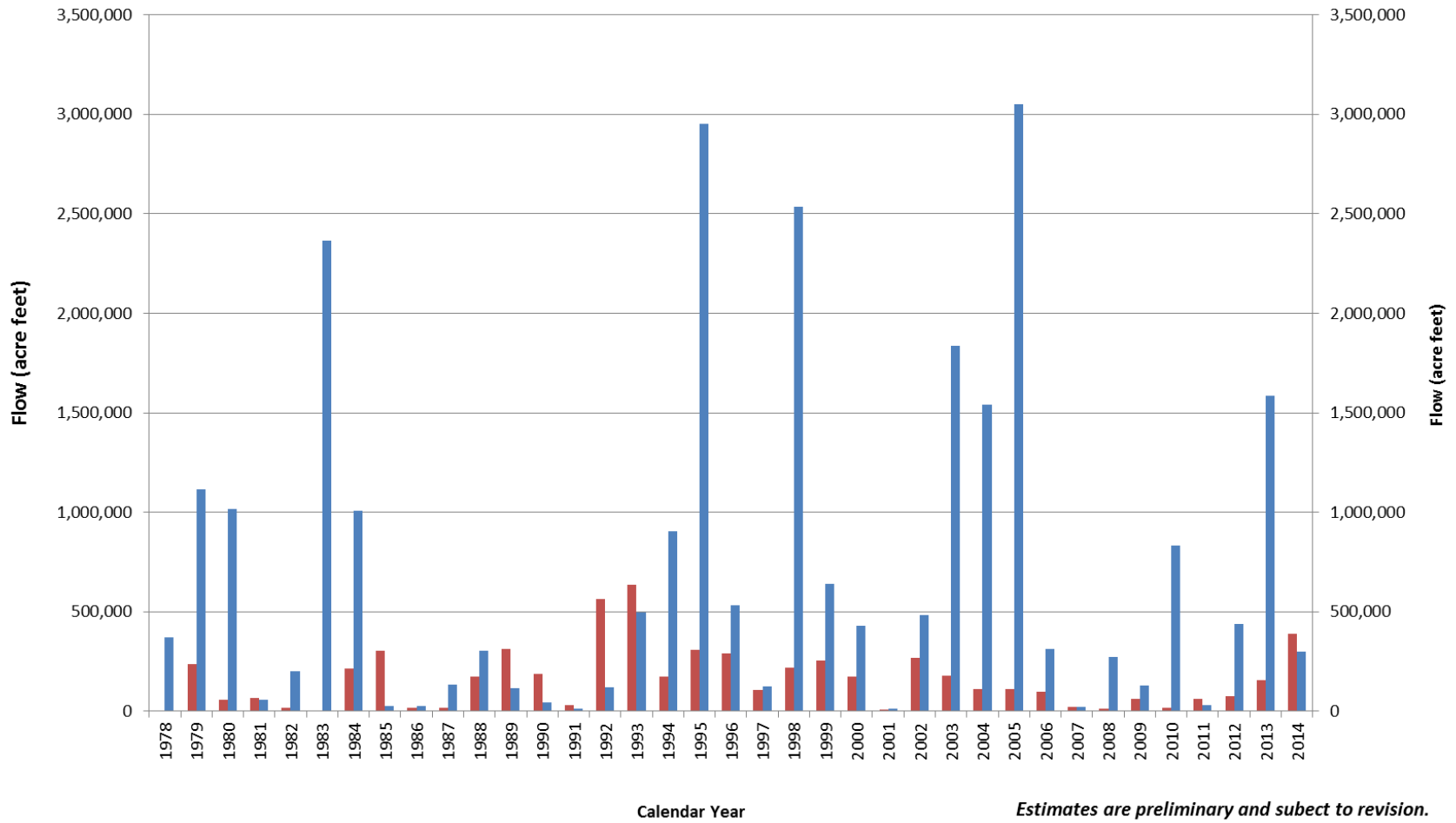


Lake releases south include regulatory releases and water supply that pass through the EAA and L-8 basins via the West Palm Beach, Hillsboro, North New River, Miami and L-8 canals; includes water not treated in STAs.

1979-1988 Base Period Lake flows to WCAs = 32.9 billion gallons per year.

Lake Releases

■ To WCAs ■ To Estuaries

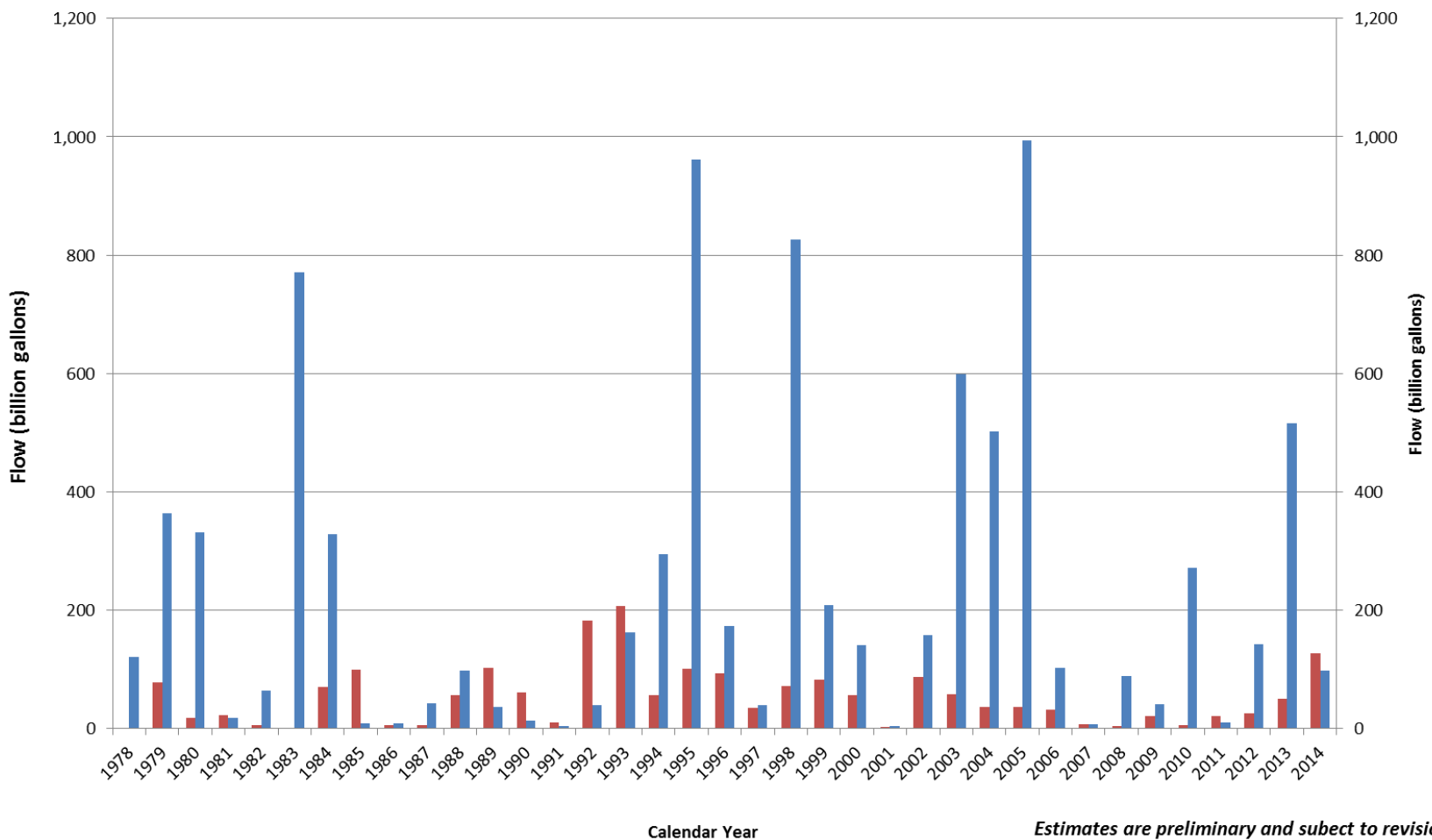


Lake releases south include regulatory releases and water supply that pass through the EAA and L-8 basins via the West Palm Beach, Hillsboro, North New River, Miami, L-8, C-43 and C-44 canals; and includes water not treated in the STAs.

Calendar Year	Lake releases			Lake Releases to the Estuaries			Total Lake Releases AF
	Total AF	Treated AF	Untreated AF	Total AF	To St. Lucie AF	To Caloosahatchee AF	
1978	3,852		3,852	372,005	162,027	209,978	375,857
1979	238,889		238,889	1,114,532	341,452	773,079	1,353,421
1980	55,599		55,599	1,017,739	238,877	778,862	1,073,338
1981	68,230		68,230	57,434	36,362	21,072	125,663
1982	19,619		19,619	199,601	55,404	144,196	219,219
1983	6,116		6,116	2,364,897	951,524	1,413,373	2,371,013
1984	215,223		215,223	1,008,334	250,496	757,837	1,223,557
1985	303,747		303,747	27,865	7,444	20,421	331,612
1986	17,775		17,775	27,280	6,581	20,699	45,055
1987	19,604		19,604	132,821	64,912	67,909	152,425
1988	173,856		173,856	302,571	163,633	138,939	476,427
1989	314,704		314,704	113,850	81,871	31,978	428,553
1990	186,140		186,140	42,065	5,029	37,036	228,206
1991	32,134		32,134	12,440	4,731	7,709	44,574
1992	562,550		562,550	120,214	25,012	95,203	682,764
1993	634,010		634,010	496,969	117,609	379,360	1,130,979
1994	175,975		175,975	903,429	224,717	678,712	1,079,405
1995	308,280	79,042	229,238	2,953,043	963,958	1,989,084	3,261,323
1996	288,885	99,903	188,982	530,872	158,265	372,607	819,758
1997	106,093	17,754	88,339	123,282	38,125	85,157	229,374
1998	218,716	53,933	164,783	2,535,109	1,042,118	1,492,991	2,753,824
1999	253,326	58,002	195,324	638,977	182,071	456,906	892,303
2000	176,203	38,630	137,574	430,960	143,896	287,065	607,164
2001	9,541	5,052	4,489	13,229	2,916	10,313	22,771
2002	268,062	238,962	29,100	483,381	110,240	373,142	751,443
2003	179,117	118,407	60,709	1,838,458	511,894	1,326,564	2,017,574
2004	111,082	78,003	33,080	1,541,125	558,391	982,733	1,652,207
2005	110,255	103,875	6,380	3,051,453	863,191	2,188,263	3,161,709
2006	97,130	56,267	40,864	313,707	80,818	232,890	410,838
2007	21,956	14,346	7,610	22,776	4,609	18,167	44,732
2008	11,759	11,758	1	273,248	105,488	167,760	285,007
2009	64,060	19,182	44,878	127,305	20,152	107,153	191,365
2010	17,251	17,243	8	832,605	260,420	572,185	849,856
2011	63,539	25,130	38,408	30,531	4,168	26,363	94,070
2012	77,233	76,071	1,162	436,646	74,591	362,054	513,879
2013	155,739	155,646	93	1,584,339	420,770	1,163,569	1,740,078
2014	389,450	381,811	7,639	301,120	6,620	294,500	690,569

Lake Releases

■ To WCAs ■ To Estuaries



Estimates are preliminary and subject to revision.

Lake releases south include regulatory releases and water supply that pass through the EAA and L-8 basins via the West Palm Beach, Hillsboro, North New River, Miami, L-8, C-43 and C-44 canals; and includes water not treated in the STAs.

Calendar Year	Lake releases to the WCAs			Lake Releases to the Estuaries			Total Lake Releases Billion Gallons
	Total Billion Gallons	Treated via STAs Billion Gallons	Untreated Billion Gallons	Total Billion Gallons	To St. Lucie Billion Gallons	To Caloosahatchee Billion Gallons	
1978	1.255	0.000	1.255	121.226	52.800	68.426	122.481
1979	77.847	0.000	77.847	363.195	111.270	251.925	441.042
1980	18.118	0.000	18.118	331.653	77.843	253.809	349.771
1981	22.234	0.000	22.234	18.716	11.849	6.867	40.950
1982	6.393	0.000	6.393	65.044	18.055	46.990	71.437
1983	1.993	0.000	1.993	770.654	310.075	460.579	772.647
1984	70.135	0.000	70.135	328.588	81.630	246.958	398.723
1985	98.983	0.000	98.983	9.081	2.426	6.655	108.063
1986	5.792	0.000	5.792	8.890	2.145	6.745	14.682
1987	6.388	0.000	6.388	43.283	21.153	22.130	49.671
1988	56.655	0.000	56.655	98.599	53.323	45.276	155.254
1989	102.553	0.000	102.553	37.100	26.680	10.421	139.654
1990	60.658	0.000	60.658	13.708	1.639	12.069	74.366
1991	10.472	0.000	10.472	4.054	1.542	2.512	14.525
1992	183.319	0.000	183.319	39.175	8.151	31.024	222.494
1993	206.606	0.000	206.606	161.948	38.325	123.623	368.554
1994	57.345	0.000	57.345	294.402	73.229	221.173	351.748
1995	100.460	25.758	74.702	962.314	314.127	648.187	1062.774
1996	94.140	32.556	61.584	172.996	51.574	121.422	267.136
1997	34.573	5.785	28.787	40.174	12.424	27.750	74.747
1998	71.273	17.575	53.698	826.121	339.597	486.524	897.394
1999	82.552	18.901	63.651	208.225	59.332	148.893	290.777
2000	57.420	12.588	44.831	140.438	46.892	93.546	197.858
2001	3.109	1.646	1.463	4.311	0.950	3.361	7.420
2002	87.354	77.871	9.483	157.520	35.924	121.596	244.874
2003	58.369	38.586	19.783	599.102	166.812	432.290	657.471
2004	36.199	25.419	10.780	502.209	181.964	320.245	538.408
2005	35.929	33.850	2.079	994.383	281.290	713.093	1030.312
2006	31.652	18.336	13.316	102.228	26.336	75.892	133.880
2007	7.155	4.675	2.480	7.422	1.502	5.920	14.577
2008	3.832	3.832	0.000	89.044	34.375	54.668	92.876
2009	20.875	6.251	14.624	41.485	6.567	34.918	62.360
2010	5.621	5.619	0.003	271.323	84.863	186.459	276.944
2011	20.705	8.189	12.516	9.949	1.358	8.591	30.655
2012	25.168	24.790	0.379	142.291	24.307	117.983	167.459
2013	50.751	50.721	0.030	516.292	137.117	379.174	567.043
2014	126.911	124.421	2.489	98.127	2.157	95.969	225.037